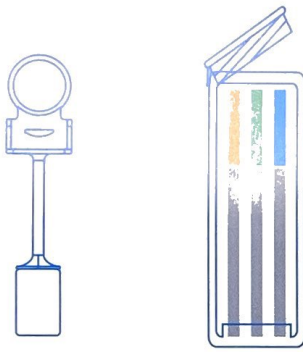


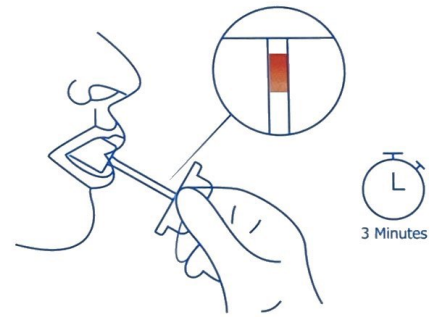
Allow the kit and specimen to come to room temperature (65°F-86°F/18°C-30°C) prior to testing.

**AVOID PLACING ANYTHING IN THE MOUTH 10 MINUTES PRIOR TO TESTING.**

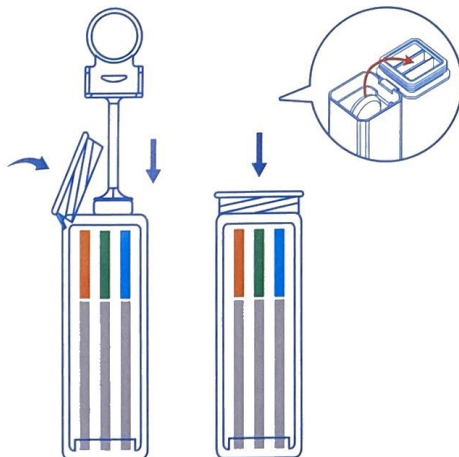
- 1 Remove the test cube and the sponge collector from the foil pouch by tearing at the notch. Place the test cube upright on a level surface.



- 2 Put the sponge end of the collector on your tongue or near cheek to collect oral fluid for about 3 minutes until color on saturation indicator strip appears RED in the indicator window. If color on saturation indicator has not turned red at 7 minutes, repeat the collection using one additional sponge collector provided, beginning with Step 1.

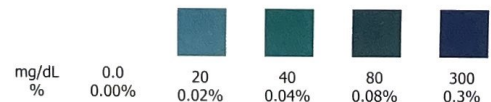


- 3 Open the test cube and place the fully saturated sponge collector inside the test cube. Press the sponge collector down firmly until it reaches the bottom of the test cube, then close the cube lid tightly while compressing the collector. Keep test cube upright on flat surface and follow Step 4.  
**Note:** Make sure the sponge collector is inserted vertically and the handle of collector is put into the clamp.



- 4 **1. Interpreting Alcohol Test Result:**  
Read result at 2 minutes. Do not read after 2 minutes.  
NEGATIVE: No color changes on reaction pad.  
POSITIVE: Compare the color of reaction pad with provided color chart to estimate the approximate blood alcohol level.

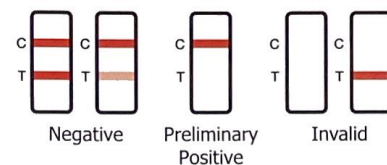
### Blood Alcohol Concentration



**NOTE:** Results after more than 2 minutes may be not accurate.

2. Interpreting Drug Test Results:  
Read results at 5 minutes. Do not read after 5 minutes.

### Drug Test Results



**NOTE:** There is no meaning attributed to line color intensity or width.