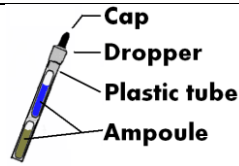
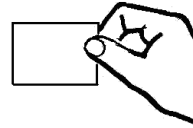


ExPen Basic Kit

Instructions & Color Chart



#534 Collection Paper



ExPen Test #1, #2, and #3 must always be **used in sequence** (starting with #1), **using the same test paper**, until a color reaction occurs: then STOP. *ExPen Test #3 should be shaken well (5 seconds) after breaking ampoules (it has 2 ampoules).*

[1] Remove the protection layer from the test paper and discard it, **exposing the sticky collection surface. Hold paper on bottom edge** (do not touch area to be used for test).

[2] Wipe the suspected area or touch the suspected substance with the collection paper. Put paper down (careful not to contaminate glued surface containing swiped substance) while preparing ampoule →

[3] Hold the ExPen tube upright. Squeeze the plastic tube to break the ampoule(s) inside. Do not squeeze tube again over broken glass. If there are two ampoules, shake the tube well for 5 seconds.

[4] Remove cap, pointing tube away from your body, **point ExPen down** and apply few drops on the paper to cover sampling area from a distance of 5 cm (2").



[5] Observe for an immediate appearance of colored stains, conforming to the color chart, indicating the presence of explosives. Check and compare results carefully with the color chart.

ExPen Test #1

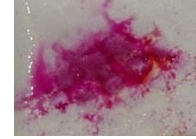
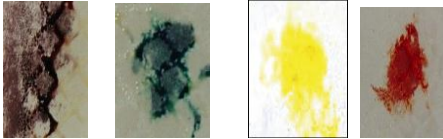
ExPen Test #2

ExPen Test #3

Polynitro-Aromatics such as TNT, TNB, and Picric acid. Compare results with the color chart herein

Nitro-esters: e.g., dynamite, smokeless powder; Nitroamines: e.g., RDX, Semtex. Pink color indicates a positive reaction.

Inorganic Nitrates: e.g., ANFO, black powder, Urea Nitrate. Pink color indicates a positive reaction.



M *Mistral Security* INC.

MEMBER OF THE MISTRAL GROUP

Bridging the Gap Between Technology and Requirements

NOTES

Technical Assistance: (800) 964-7872.

Ask for Wet Chemistry Product Manager.

Caution: keep out of reach of children. In case of eye or skin contact, flush well with water.

Note: A paper used for the first sequence test, may gradually change its color to uniform pink after several minutes. Disregard this color change.